


1965

1965 - 47th Annual Bible Lectureship, "Lift Up Your Eyes," Abilene Christian College

Abilene Christian College

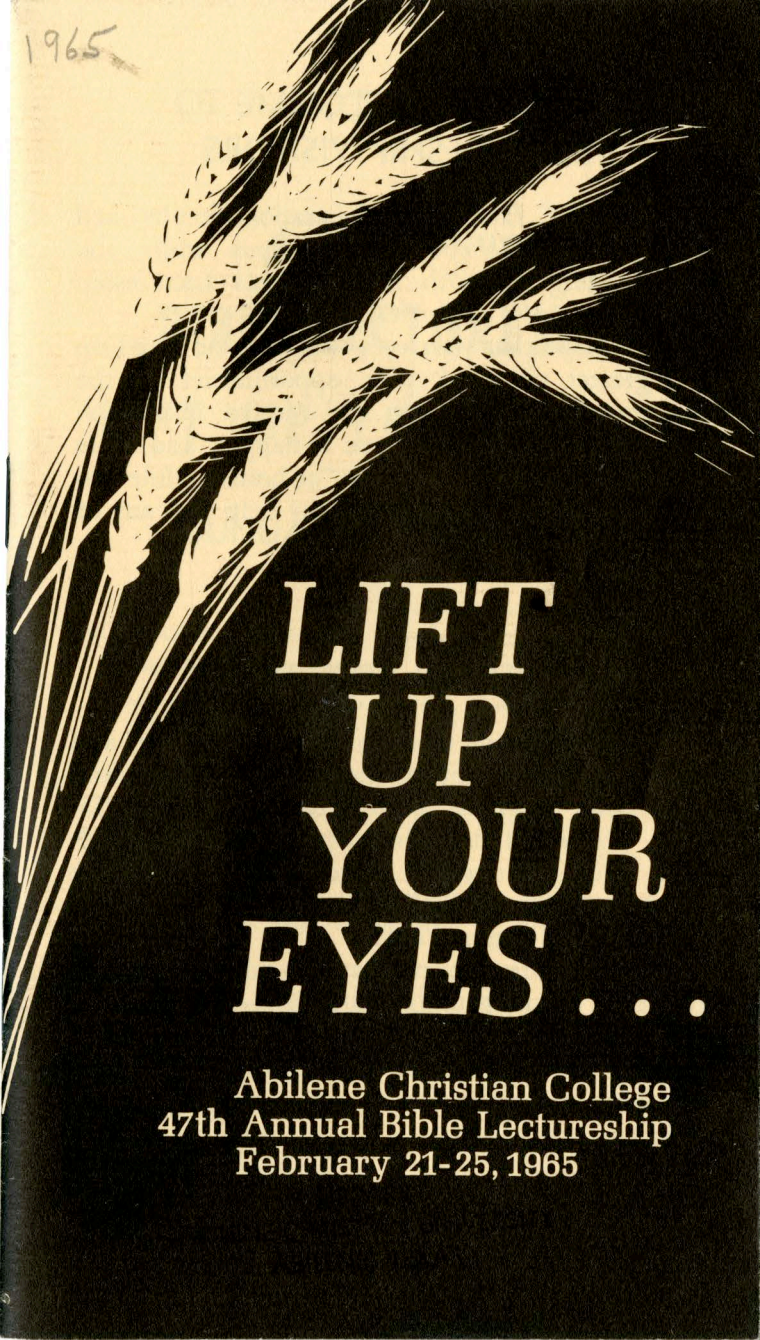
Follow this and additional works at: https://digitalcommons.acu.edu/sumlec_prog

 Part of the [Biblical Studies Commons](#), [Christian Denominations and Sects Commons](#), [Christianity Commons](#), [Comparative Methodologies and Theories Commons](#), [Ethics in Religion Commons](#), [History of Christianity Commons](#), [Liturgy and Worship Commons](#), [Missions and World Christianity Commons](#), [Practical Theology Commons](#), and the [Religious Thought, Theology and Philosophy of Religion Commons](#)

Recommended Citation

Abilene Christian College, "1965 - 47th Annual Bible Lectureship, "Lift Up Your Eyes," Abilene Christian College" (1965). *Lectureship and Summit Programs*. 45.
https://digitalcommons.acu.edu/sumlec_prog/45

This Program is brought to you for free and open access by the Lectureship, Summit, and Ministry Events at Digital Commons @ ACU. It has been accepted for inclusion in Lectureship and Summit Programs by an authorized administrator of Digital Commons @ ACU.



1965

LIFT UP YOUR EYES...

Abilene Christian College
47th Annual Bible Lectureship
February 21-25, 1965

A HEARTY WELCOME TO LECTURESHIP VISITORS

The ACC family—administration, faculty, and students—welcome you to the campus while you are attending the 47th Annual Bible Lectureship Program on **LIFT UP YOUR EYES**.

We hope that your eyes will truly be lifted up in a greater vision of your opportunities in the Lord's work and that you will receive inspiration and information to make you a happier and more effective servant of Christ. Be "at home" while you are here, and call upon us for any help that any of us may give.

PLEASE REGISTER

It is important that we have your name and address so that we can notify you concerning future Lectureship programs through our publication **VISION**. We would also like to have your Abilene address in case you receive emergency calls. You are asked to register at the "Lectureship Central" booth in the Exhibit Center Tent.

The Lectureship program is scheduled from 8:00 each morning until late each evening, and we urge you to take full advantage of it. We are hoping you will write to us any constructive suggestions after you get home.

**J. D. THOMAS
DIRECTOR**

PROGRAM

47th Annual

BIBLE LECTURESHIP

"LIFT UP YOUR EYES"

SUNDAY, FEBRUARY 21

4:00 p.m.

COLLEGE CHURCH AUDITORIUM

Teen-Age Forum

(Panel discussion by teen-agers and adults on current teen-age problems.
See page 7 for details.)

7:30 p.m.

SEWELL AUDITORIUM

To Lost Frontiers

Wesley Reagan, Winnipeg, Manitoba, Canada — 40 minutes

Song Director Jesse Johnson, ACC

COLLEGE CHURCH AUDITORIUM

To Our Source of Help

James LeFan, Temple — 40 minutes

Song Director Holland Boring, Jr., Abilene

HILLCREST CHURCH AUDITORIUM

To Unity Without Union

John C. Stevens, Abilene — 40 minutes

Song Director Paul Smith, Abilene

MONDAY, FEBRUARY 22

8:00 a.m.

LECTURESHIP CLASSES at this hour in the various classrooms.
(See page 19 for teachers, rooms, and subjects.)

9:15 a.m.

SEWELL AUDITORIUM

To the Sheep Who Have No Shepherd

Adair P. Chapman, Dallas — 40 minutes

Song Director . . . W. Dwayne Dennis, Oklahoma City, Okla.

COLLEGE CHURCH AUDITORIUM

To Today's Intellectual Challenges

Abraham Malherbe, Abilene — 40 minutes

Song Director . . . O. C. Bevill, Jr., Lancaster

HILLCREST CHURCH AUDITORIUM

To Heralding the Truth

Robert W. Holton, Abilene — 40 minutes

Song Director . . . Bill Luttrell, Abilene

10:30 a.m.

COLLEGE CHURCH AUDITORIUM

Opportunities in New Fields

Paul Southern, Abilene, Presiding

Song Director . . . W. Dwayne Dennis, Oklahoma City, Okla.

10:45 a.m.

LECTURESHIP CLASSES at this hour in the various classrooms.
(See pages 19-24 for teachers, rooms, and subjects.)

PARKING

Special parking arrangements are available again this year; and the locations of the parking area are indicated on the campus plat on page 26 of this program.

The main parking area (which you are encouraged to use) is north of Edwards Dormitory and west of the stadium. Buses will run between the College church and the Hillcrest church, and those who park in the main parking area will have the convenience of riding from where they park to other parts of the campus.

12:00 noon

BENNETT GYMNASIUM

ACC ALUMNI LUNCHEON

Honoring the outstanding alumnus of the year, Judge Jack Pope. (All alumni and friends are invited.)

2:00 p.m.

SEWELL AUDITORIUM

PANEL DISCUSSION:

"Science and Christian Faith"

**The Limitations of Science in the
Realm of Faith**

W. Clark Stevens, Searcy, Arkansas — 8 minutes

The Impact of 20th Century Science

Moody Coffman, Oklahoma City, Oklahoma — 8 minutes

Song Director . . . O. C. Beville, Jr., Lancaster

COLLEGE CHURCH AUDITORIUM

To See the Need of Loving as He Loved

C. W. Bradley, Whitehaven, Tennessee — 40 minutes

Song Director . . . Holland Boring, Jr., Abilene

3:30 p.m.

LECTURESHIP CLASSES at this hour in the various classrooms.
(See pages 19-24 for teachers, rooms, and subjects.)

4:30 p.m.

COLLEGE CHURCH AUDITORIUM

Teen-Age Forum

(See page 7 for full description.)

5:00 p.m.

MISSION-FIELD MEETINGS

(See Daily News Sheet for list of fields and locations of meetings.)

SEWELL AUDITORIUM

Abilene Christian College Choralaires

Richard Fulton, Director

7:00 p.m.

SEWELL AUDITORIUM

To Our Source of Help

James LeFan, Temple — 40 minutes

Song Director . . . B. B. Stevens, Irving

COLLEGE CHURCH AUDITORIUM

To Unity Without Union

John C. Stevens, Abilene — 40 minutes

Song Director . . . Fred Cowley, Abilene

HILLCREST CHURCH AUDITORIUM

To Lost Frontiers

Wesley Reagan, Winnipeg, Manitoba, Canada — 40 minutes

Song Director . . . Don Clayton, McKinney

The 1963 Lectureship Exhibit Tent.



8:30 p.m.

COLLEGE CHURCH AUDITORIUM

Biblical Forum

Everett Ferguson, Abilene, Presiding

(See page-25 for speakers and topics.)

SEWELL AUDITORIUM

"J. B."—Religious play

ACC Drama Department under the direction of Lewis Fulks

Teen-Age Forum

Theme: "Be Thou an Example . . ."

4:30 p.m., Sunday through Thursday,
February 21-25

All meetings in College Church Auditorium

Panelists:

JOE BARNETT, Amarillo

DAVID ROPER, Muskogee, Oklahoma
and Four Teen-Agers Each Day!



DAILY TOPICS

Sunday—Youth and Authority

Monday—Youth and Attitudes

Tuesday—Youth and Language

Wednesday—Youth and Education

Thursday—Youth and the Temple of God

TUESDAY, FEBRUARY 23

8:00 a.m.

LECTURESHIP CLASSES at this hour in the various classrooms.
(See pages 19-24 for teachers, rooms, and subjects.)

9:15 a.m.

SEWELL AUDITORIUM

To Today's Intellectual Challenges

Abraham Malherbe, Abilene — 40 minutes

Song Director . . . Jack McKinney, Abilene

COLLEGE CHURCH AUDITORIUM

To Heralding the Truth

Robert W. Holton, Abilene — 40 minutes

Song Director . . . Vernon Moody, Abilene

HILLCREST CHURCH AUDITORIUM

To the Sheep Who Have No Shepherd

Adair P. Chapman, Dallas — 40 minutes

Song Director . . . Richard Fulton, Abilene

10:30 a.m.

COLLEGE CHURCH AUDITORIUM

Opportunities in New Fields

Paul Southern, Abilene, Presiding

Song Director . . . Rick Wickman, ACC

10:45 a.m.

LECTURESHIP CLASSES at this hour in the various classrooms.
(See pages 19-24 for teachers, rooms, and subjects.)

1:00 p.m.

SEWELL AUDITORIUM

Abilene Christian High School Chorus

Fred Cowley, Director

2:00 p.m.

SEWELL AUDITORIUM

PANEL DISCUSSION:

"The Present Status of Evolution"

Biology and Evolution

Norman Hughes, Searcy, Arkansas — 8 minutes

Evolution as a Philosophical Faith

J. D. Thomas, Abilene — 8 minutes

Song Director . . . Avon Whitworth, Dallas

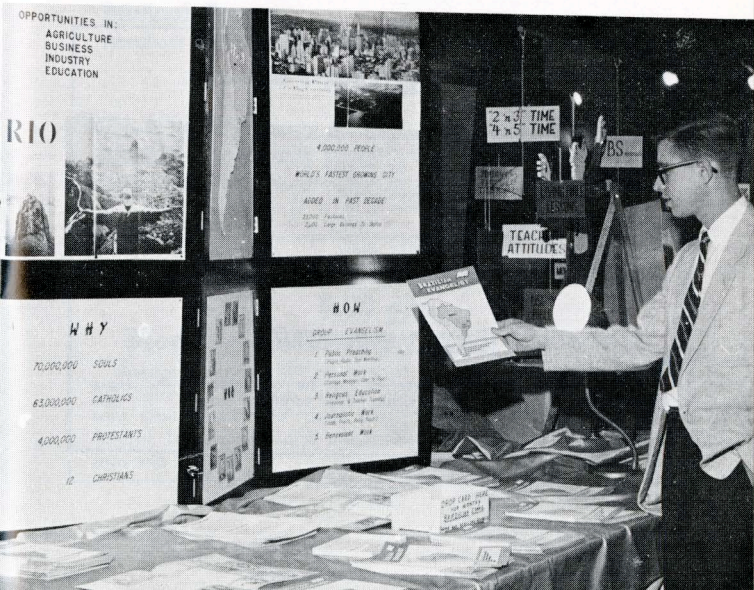
COLLEGE CHURCH AUDITORIUM

To Foreign Campaigns for Christ

Fred Walker, Nashville, Tennessee — 40 minutes

Song Director . . . Bill Luttrell, Abilene

Religious Exhibits



3:30 p.m.

LECTURESHIP CLASSES at this hour in the various classrooms.
(See pages 19-24 for teachers, rooms, and subjects.)

4:00-5:00 p.m.

NELSON HALL PARLOR

"W" Club Silver Tea for all guests.

4:30 p.m.

COLLEGE CHURCH AUDITORIUM

Teen-Age Forum

(See page 7 for full description.)

4:45 p.m.

BENNETT GYMNASIUM

Preachers and Elders Dinner

5:00 p.m.

SEWELL AUDITORIUM

Winners of Campus "Sing Song" Contest

MEALS

Meals may be obtained at Catchings Cafeteria in the heart of the campus. A special meal ticket is provided for Lectureship visitors allowing 5 meals for \$4. Meals will be served from 6:30 a.m. to 8:00 a.m.; 11:00 a.m. to 1:30 p.m.; and 5:00 to 6:15 p.m.



BABY SITTING

A list of professional nurseries can be obtained at the registration tables for those desiring this service.

7:00 p.m.

ALL AUDITORIUMS

**Opportunity to Invest in the Students of Abilene
Christian College**

SEWELL AUDITORIUM

To the Christian's Emotional Needs

Paul Easley, Austin — 40 minutes

Song Director Joe Baisden, Austin

COLLEGE CHURCH AUDITORIUM

To See Our Opportunities

Don Gardner, Los Angeles, California — 40 minutes

Song Director Bob Hunter, Abilene

HILLCREST CHURCH AUDITORIUM

To See Our Resources

Phillip Morrison, Miami, Florida — 40 minutes

Song Director Cecil Hutson, Irving

8:30 p.m.

COLLEGE CHURCH AUDITORIUM

Biblical Forum

Abraham Malherbe, Abilene, Presiding

(See page 25 for speakers and topics.)

SEWELL AUDITORIUM

"J. B."—Religious play

ACC Drama Department under the direction of Lewis Fulks

MISSION-FIELD MEETINGS

5:00 p.m.

Monday, Wednesday, and Thursday

Special meetings in the interest of specific mission fields are held at this hour on the days indicated. Interested persons should check the daily LATE NEWS BULLETIN each day for the list of fields and the room numbers where the meetings will be held.

WEDNESDAY, FEBRUARY 24

8:00 a.m.

LECTURESHIP CLASSES at this hour in the various classrooms.
(See pages 19-24 for teachers, rooms, and subjects.)

9:15 a.m.

SEWELL AUDITORIUM

To the Church in an Ecumenical Age

Edward Rockey, Brooklyn, New York — 40 minutes

Song Director Jesse Johnson, ACC

COLLEGE CHURCH AUDITORIUM

To the Transforming Power of the Gospel

R. N. Hogan, Los Angeles, California — 40 minutes

Song Director Rick Wickman, ACC

HILLCREST CHURCH AUDITORIUM

To the White Fields

Geoffrey Ellis, Beamsville, Ontario, Canada — 40 minutes

Song Director Don Williams, Fort Worth

10:30 a.m.

COLLEGE CHURCH AUDITORIUM

Opportunities in New Fields

Paul Southern, Abilene, Presiding

Song Director Don Clayton, McKinney

10:45 a.m.

LECTURESHIP CLASSES at this hour in the various classrooms.
(See pages 19-24 for teachers, rooms, and subjects.)

2:00 p.m.

SEWELL AUDITORIUM

PANEL DISCUSSION:

"Genesis and the Origin of Man"

Scientific Knowledge and the Origin of Man

Michael Weed, ACC — 8 minutes

Biblical Interpretation and Scientific Knowledge

Neil Lightfoot, Abilene — 8 minutes

Song Director . . . B. B. Stevens, Irving

COLLEGE CHURCH AUDITORIUM

To See the Glorified Church

Don McGaughey, Torrance, California — 40 minutes

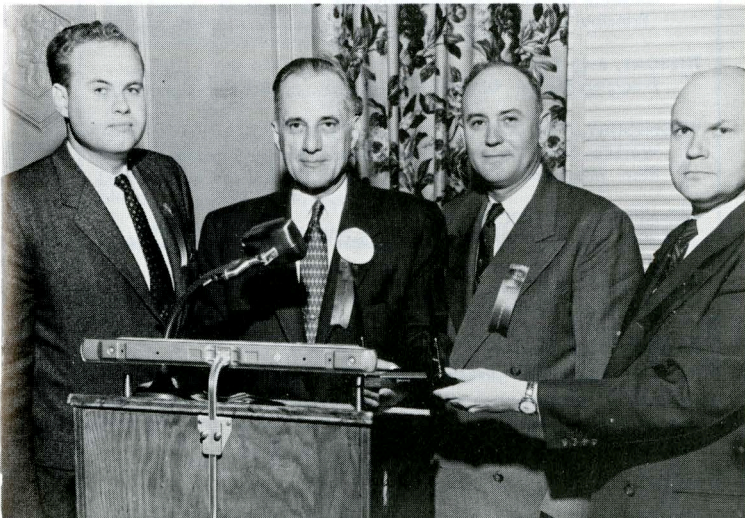
Song Director . . . Don Williams, Fort Worth

3:30 p.m.

LECTURESHIP CLASSES at this hour in various classrooms.

(See pages 19-24 for teachers, rooms, and subjects.)

Editors at Dinner Meeting



4:30 p.m.

COLLEGE CHURCH AUDITORIUM

Teen-Age Forum

(See page 7 for full description.)

5:00 p.m.

MISSION-FIELD MEETINGS

(See Daily News Sheet for list of fields and locations of meetings.)

SEWELL AUDITORIUM

Abilene Christian College A Cappella Chorus

Vernon Moody, Director

Special Breakfast and Dinner Announcements

PUBLIC WELCOME AT ALL THESE

MONDAY, 12 NOON

ACC Alumni Luncheon Bennett Gymnasium

MONDAY, 5:00 P.M.

Christian Bible Teacher Staff Writers Dinner Windsor Hotel

TUESDAY, 6:30 A.M.

Christian School Superintendents and
Principal's Breakfast Ramada Inn

TUESDAY, 4:45 P.M.

Preachers-Elders Dinner Bennett Gymnasium

WEDNESDAY, 7:00 A.M.

World's Fair Evangelism Breakfast... Starlite Inn Motor Hotel
Star Magazine Breakfast Starlite Inn Motor Hotel

WEDNESDAY, 12 NOON

20th Century Christian Breakfast Windsor Hotel

WEDNESDAY, 4:45 P.M.

Ibaraki Christian College Dinner Windsor Hotel

THURSDAY, 12 NOON

Herald of Truth Luncheon Starlite Inn Motor Hotel

5:30 p.m.

COLLEGE CHURCH AUDITORIUM

ACC Mission Study Class

E. W. McMillan, Speaker

7:00 p.m.

(Extra time for hymn singing will be used at this hour in all auditoriums.)

SEWELL AUDITORIUM

To See Our Opportunities

Don Gardner, Los Angeles, California — 40 minutes

Song Director . . . Robert Carver, San Antonio

COLLEGE CHURCH AUDITORIUM

To See Our Resources

Phillip Morrison, Miami, Florida — 40 minutes

Song Director . . . Marvin Crowe, Denver, Colorado

HILLCREST CHURCH AUDITORIUM

To the Christian's Emotional Needs

Paul Easley, Austin — 40 minutes

Song Director . . . Texas H. Stevens, Houston

8:30 p.m.

COLLEGE CHURCH AUDITORIUM

Biblical Forum

Bill Humble, Abilene, Presiding

(See page 25 for speakers and topics.)

SEWELL AUDITORIUM

"J. B."—Religious play

ACC Drama Department under the direction of Lewis Fulks

THURSDAY, FEBRUARY 25

8:00 a.m.

LECTURESHIP CLASSES at this hour in various classrooms.
(See pages 19-24 for teachers, rooms, and subjects.)

9:15 a.m.

SEWELL AUDITORIUM

To the Transforming Power of the Gospel

R. N. Hogan, Los Angeles, California — 40 minutes

Song Director . . . M. L. Daniels, Abilene

COLLEGE CHURCH AUDITORIUM

To the White Fields

Geoffrey Ellis, Beamsville, Ontario, Canada — 40 minutes

Song Director . . . Dan E. Warden, Amarillo

HILLCREST CHURCH AUDITORIUM

To the Church in An Ecumenical Age

Edward Rockey, Brooklyn, New York — 40 minutes

Song Director . . . Horace Coffman, Lubbock

Get Your Copy of the Lectureship Book

Lift Up Your Eyes

\$3.95

10:30 a.m.

COLLEGE CHURCH AUDITORIUM

Opportunities in New Fields

Paul Southern, Abilene, Presiding

Song Director Jesse Johnson, ACC

10:45 a.m.

LECTURESHIP CLASSES at this hour in various classrooms.
(See pages 19-24 for teachers, rooms, and subjects.)

2:00 p.m.

SEWELL AUDITORIUM

PANEL DISCUSSION:

"The Origin and Preservation of the Bible"

Inspiration and Canon

Everett Ferguson, Abilene — 8 minutes

Text and Transmission

Billy Wilbanks, ACC — 8 minutes

Song Director Dan E. Warden, Amarillo

COLLEGE CHURCH AUDITORIUM

To See Human Suffering

Robert L. Johnson, Abilene — 40 minutes

Song Director Cecil Hutson, Freeport

3:30 p.m.

LECTURESHIP CLASSES at this hour in various classrooms.
(See pages 19-24 for teachers, rooms, and subjects.)

4:30 p.m.

COLLEGE CHURCH AUDITORIUM

Teen-Age Forum

(See page 7 for full description.)

5:00 p.m.

MISSION-FIELD MEETINGS

(See Daily News Sheet for list of fields and locations of meetings.)

SEWELL AUDITORIUM

Abilene Christian College Orchestra

M. L. Daniels, Conductor

7:00 p.m.

FEATURED SPEECHES

SEWELL AUDITORIUM

To the Lifted-Up Christ

Jimmy Allen, Searcy, Arkansas — 40 minutes

Song Director . . . Avon Whitworth, Dallas

COLLEGE CHURCH AUDITORIUM

To See the Importance of the Church

John Allen Chalk, Cookeville, Tennessee — 40 minutes

Song Director . . . A. E. Wells, Abilene

8:30 p.m.

SEWELL AUDITORIUM

Abilene Christian College Band

Douglas Fry, Conductor

MEMO TO VISITORS

Headquarters on the campus will be the "Lectureship Central" Booth in the Exhibit Tent. Here we keep registration cards in a master file to aid visitors in locating friends or in cases of emergency. All records will be found each night at the Housing Office in Mabree Dormitory after evening lectures.

Everyone Please Register!

DAILY CLASSES

(Each of these classes meets each day at the hours indicated below.)

8:00 a.m.

CLASSES FOR WOMEN

Teaching the Primary Age (for advanced teachers)

Room 118B, College Church — Mrs. Gorman Kenley, Abilene

Teaching the Juniors (for beginning teachers)

Room 203, College Church — Mrs. Jack Burch, New Orleans, La.

The Role of Christian Women

College Church Auditorium — Mrs. Henry E. Speck, Jr., Abilene

OTHER CLASSES

Organizing and Supervising the Bible School

Room 115, College Church — Fred Allen, Corpus Christi

The Vacation Bible School

Room 114, College Church — Charles Hodge, Fort Worth

Church Music

Room 201, College Church — Robert W. Carver, San Antonio

General Visitation

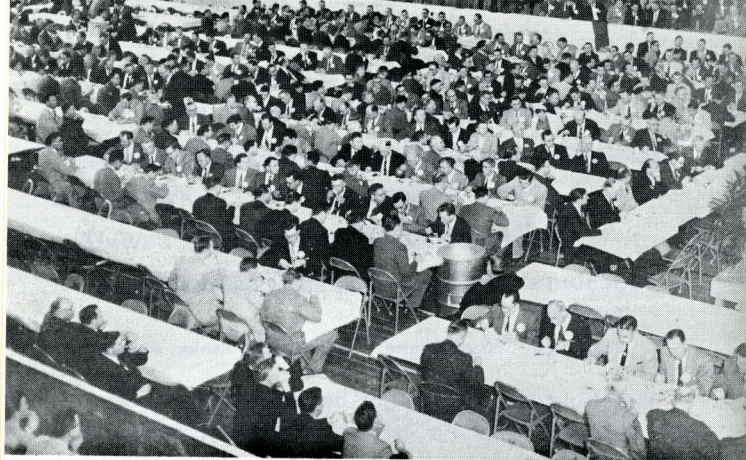
Room 118A, College Church — Larry McKenzie, Abilene

Effective Church Planning (Tues. & Wed. only)

College Church Chapel — Walter Burch, Abilene

What Others Are Doing in Mission Work

Room 208, College Church — Earl Clevenger, Abilene



The 1964 Preachers-Elders Dinner.

OTHER ANNUAL EVENTS AT ACC:

• **Bible Teachers' Workshop**

July 19-22, 1965

• **The Elders' Workshop**

(for present and future elders, deacons, and other church leaders and their wives)

August 2, 3, 4, 1965

WRITE IN FOR DETAILS

10:45 a.m.

CLASSES FOR WOMEN

Teaching the Pre-School Age (for advanced teachers)

Room 118A, College Church — Mrs. Jay Smiley, Amarillo

Teaching the Primary Age (for beginning teachers)

Room 118B, College Church — Mrs. W. O. McLeod, Westlake, La.

Teaching the Intermediates

Room 114, College Church — Mrs. Penn Gilbreth, Abilene

Biblical Geography and History

College Church Chapel — Mrs. W. S. Etchieson, Borger

OTHER CLASSES

Teaching the Juniors (for advanced teachers)

Room 115, College Church — Johnny Thompson, Midland

Teaching the High School Age

Room 208, College Church — Duane Eggleston, Hutchinson, Kansas

The Christian Youth Center (Tues. & Wed. only)

Room 117, College Church — Bill Hilton, Abilene

The Chaplaincy — A Great Mission Opportunity (Tues. & Wed. only)

Room 203, College Church — Leonard Waggoner, Cleburne

3:30 p.m.

CLASSES FOR WOMEN

Teaching the Pre-School Age (for beginning teachers)

College Church Chapel — Mrs. Zira Lafevre, Big Spring

Woman's Place in the Son

College Church Auditorium — Mrs. T. C. Clark, Post

The Missionary's Wife

Room 118A, College Church — Mrs. B. E. Bawcom, Clovis, N.M.

One of the Opening Lectures in 1964.



OTHER CLASSES

Teaching Adults

Room 103, Bible Building — Perry Cotham, Big Spring

Teaching Young People

Roberson Chapel — Don Williams, Fort Worth

The Men's Training Class

Room 208, College Church — Darrell J. Denney, Ponca City, Okla.

The Educational Director

Room 117, College Church — Jim Bevis, Lubbock

The Cottage Meeting

Room 203, College Church — Charles A. Whitmire, Borger

Visual Aids

Room 226, College Church — Gerald Pinson, Dallas

Personal Work

Room 115, College Church — Jack Exum, Dallas

Christian Camps

Room 224, College Church — Dale Smith, Grand Prairie

General Teacher Training

Room 222, College Church — Bruce Davis, Abilene

The Full-Time Elder

Room 328, Citizenship Building—Harry Wright, Washington, D.C.

A Key to the Campus



Ambler Ave. (Albany Highway 351)

Parking Areas:
Student
Visitor
Faculty



Track Stadium

Ind Art

Ind Art

Shop

Edwards Hall

Mabee Hall

Music Bldg

Apartment

Annex

Band Hall

CAMPUS COURT

E N. 18th Street

Campus School

Zellner Hall

McKinzie Hall

Bible Building

Students Exchange

Faculty Off

Administration Building

Citizenship Center

Science Building

Sewell Auditorium

McDonald Hall

Tent

Catchings Cafeteria

Library

Bennett Gym

Offices

Athletic

Nelson Hall

Gardner Hall

E N. 16th Street

Washington Blvd

College Church of Christ

E N. 10th Street

FARM ROAD 1234

TO HIGHWAY 80



Announcing . . .

The 48th Annual
Abilene Christian College
BIBLE LECTURESHIP

February 20-24, 1966

THEME:

"The Bible Today"

- (1) The Bible as Revelation
- (2) The Inspiration of Scripture
- (3) The Authority of the Bible
- (4) The Unity of the Bible
- (5) Biblical Prophecy and Fulfillment
- (6) Archaeology and the Bible
- (7) The New Testament Use of the Old Testament
- (8) Use of the Bible in History
- (9) Devotional Use of the Bible
- (10) How to Study the Bible
- (11) How to Interpret the Bible
- (12) The Christ of the Bible
- (13) The Holy Spirit and the Bible
- (14) The Bible and the Inner Man
- (15) The Influence of the Bible
- (16) The Enduring Word
- (17) Oh How Love I Thy Word!
- (18) The Bible Today

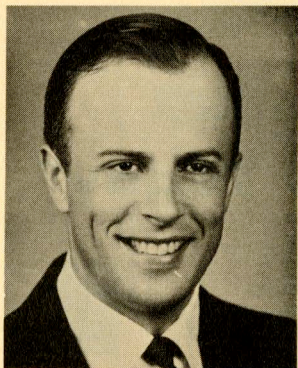
VF Bible Lectureship

FEATURED SPEAKERS

Thursday, February 25, 1965
7:00 p.m.

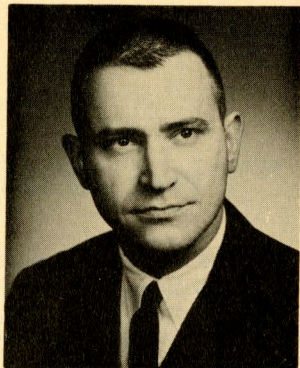
LIFT UP YOUR EYES...

"To The Lifted-Up
Christ"



Jimmy Allen, Speaker
in Sewell Auditorium

"To See the Importance
of the Church"



John Allen Chalk, Speaker
in College Church Aud.

Ample Seating.....Ample Parking
for this

GRAND CLIMAX EVENING