

Abilene Christian University

Digital Commons @ ACU

Dixieland College Materials

Theophilus Brown Larimore Papers

1912

Moeschl-Edwards Corrugating Company advertisement

Moeschl-Edwards Corrugating Company

Follow this and additional works at: https://digitalcommons.acu.edu/dixieland_college_materials



Part of the [Biblical Studies Commons](#), [Christian Denominations and Sects Commons](#), [Christianity Commons](#), and the [Religious Education Commons](#)

Recommended Citation

Moeschl-Edwards Corrugating Company advertisement, Dixieland College Material (4), Theophilus Brown Larimore Papers, 1907-1935. Center for Restoration Studies MS #6. Abilene Christian University Special Collections and Archives, Brown Library. Abilene Christian University, Abilene, TX.

This Manuscript is brought to you for free and open access by the Theophilus Brown Larimore Papers at Digital Commons @ ACU. It has been accepted for inclusion in Dixieland College Materials by an authorized administrator of Digital Commons @ ACU.

THE MOESCHL-EDWARDS CORRUGATING CO.

INCORPORATED.

MANUFACTURERS OF

ROOFING, SIDING, CEILING, EAVE TROUGH, CONDUCTOR PIPE, SHINGLES.

ARCHITECTURAL SHEET METAL WORK

GENERAL OFFICES: COVINGTON, KY.

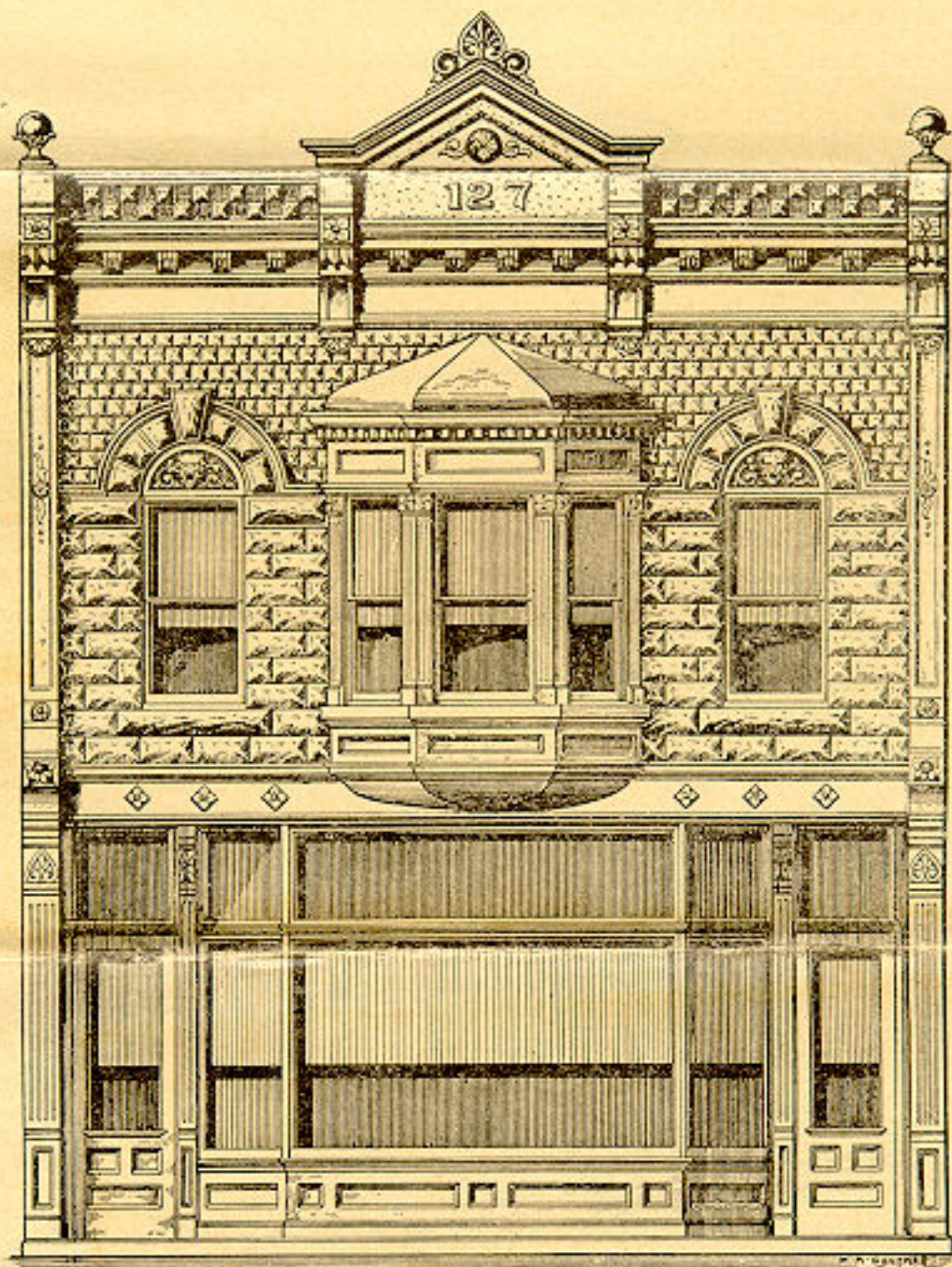


FIG. NO. 842—GALVANIZED IRON AND COPPER BUILDING FRONTS.

Our facilities enable us to make any style of Sheet Metal Fronts, together with all parts upon the most advanced ideas of construction. Send us a rough pencil sketch, with measurements, and we will make suggestive designs FREE.